

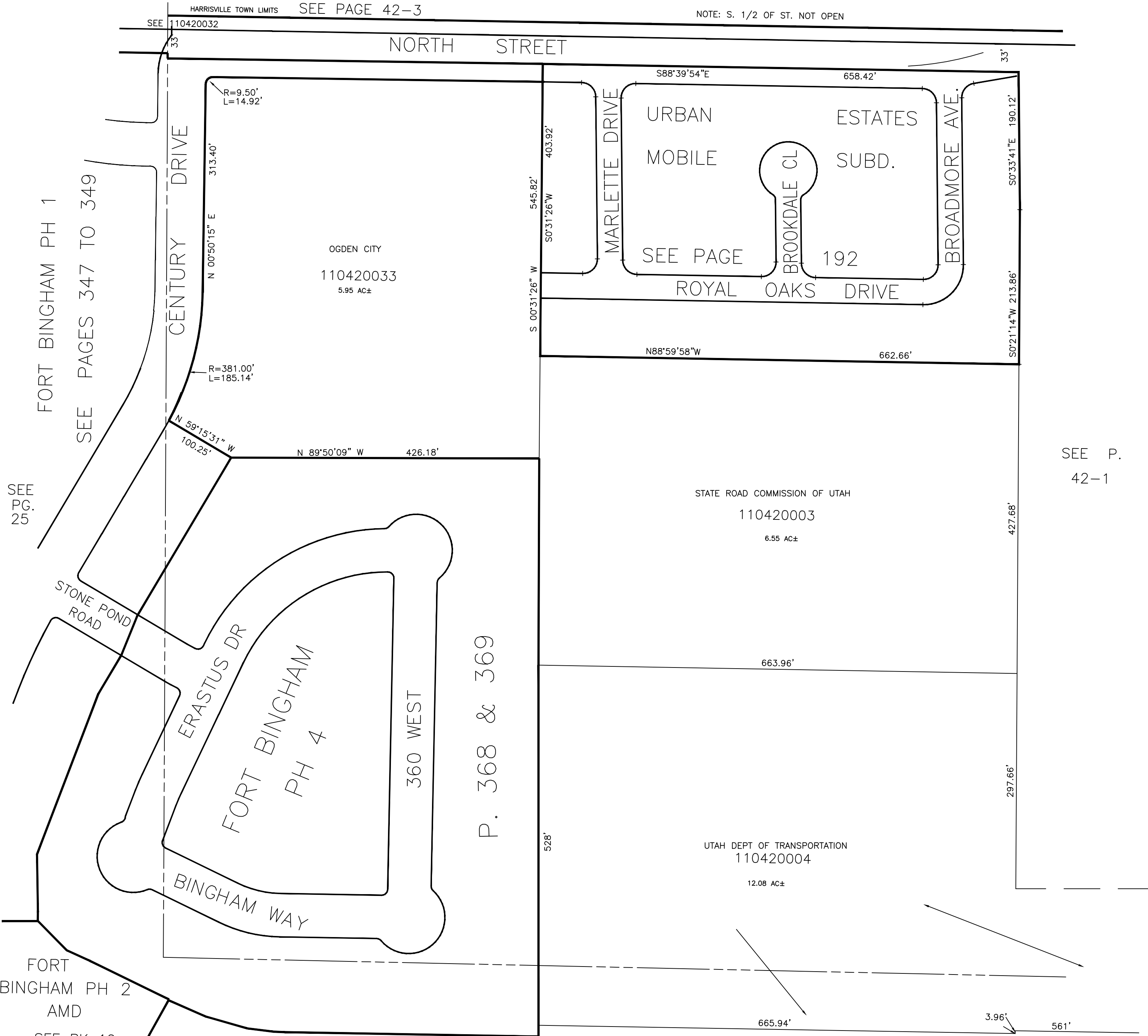
PART OF S.W. 1/4 OF
SECTION 8, T.6N.,R.1W., S.L.B.&M.

42-2

TAXING UNIT: 25

IN OGDEN CITY
SCALE 1" = 100'

ALSO SEE PAGE 42-3



FORT BINGHAM PH 1
SEE PAGES 347 TO 349

SEE PG. 25

FORT BINGHAM PH 2
AMD
SEE BK 12
P. 213-215

SEE P.
42-1

SEE BOOK 12 PAGE 75-1